

Report No.: 168371759a 001 Page 1 of 5

Client: DONGGUAN AIFENG INFINITE OPTICAL TECHNOLOGY CO., LTD.

Contact Information: Room 303, Building 1, No. 1, Shangtanghe 1st Road, Dongguan,
Guangdong, P. R. China

Test item(s): 2 materials

**Identification/
Model No(s):** TEMPERED GLASS SCREEN PROTECTOR
AF001

Condition at delivery: Test item complete and undamaged.

Sample Receiving date: 2022-05-10

Testing Period: 2022-05-13 to 2022-05-18

Place of testing: Chemical laboratory Shenzhen

Test Specification:

1. Cadmium, Lead, Chromium (VI), Mercury, Polybrominated biphenyls (PBB) and Polybrominated diphenyl ethers (PBDE), ROHS Phthalates (BBP, DBP, DEHP, DIBP)
According to RoHS(recast): Restriction of the Use of Certain Hazardous Substances in Electrical and Electronic Equipment, 2011/65/EU Annex II and its amendment Directive (EU) 2015/863

Test result:

PASS

Other information:

Country of Origin: China

For and on behalf of
TÜV Rheinland (Shenzhen) Co., Ltd.



2022-05-19

Alvin Huang / Senior Project Engineer

Date

Name/Position

Sample information is provided by customer. Test result is drawn according to the kind and extent of tests performed.
This test report relates to the above mentioned test sample. Without permission of the test center this test report is not permitted to be duplicated in extracts. This test report does not entitle to carry any safety mark on this or similar products.
"Decision Rule" document announced in our website (<https://www.tuv.com/landingpage/en/qm-gcn/>) describes the statement of conformity and its rule of enforcement for test results are applicable throughout this test report.

Test Report No.: 168371759a 001

Page 2 of 5

Material List:

Item: TEMPERED GLASS SCREEN PROTECTOR
AF001

Material No.	Material	Color	Location
M001	Glass	Transparent	Refer to photo
M002	Plastic + adhesive	Transparent	Refer to photo

Test Report No.: 168371759a 001

Page 3 of 5

1. Screening Test by XRF spectroscopy

Test Method: Cadmium, Lead, Mercury, Chromium, Bromine
-- With reference to IEC 62321-3-1:2013

Test Result:

Material No.	Cd	Cr	Pb	Hg	Br
M001	BL	BL	BL	BL	n.a.
M002	BL	BL	BL	BL	BL

Abbreviation: Pb = Lead
Cd = Cadmium
Hg = Mercury
Cr = Chromium
Br = Bromine
n.a. = Not applicable
BL = Below limit
OL = Over limit
d. = Detected

Remark:

- (*1) The screening result was detected in the inconclusive region or over limits, thus the further wet chemistry tests are suggested.
- (*2) Component(s)/ materials(s) with an area of less than 2 mm x 2 mm will not be selected for testing according to RoHS Directive 2011/65/EU due to technical reason.
For the test sample does not have detail materials information provided by client, visually identical materials (e.g. wire insulation, solder points, etc.) will be considered as the same material.
Solder points on a printing circuit board will be examined several times based on optical anomalies or discoloration of the solder point(s) unless the solder point(s) is obviously generated automatically during production.
All other materials will be sampled and tested at one test point representatively.
- (*3) The Chromium (Cr) and Bromine (Br) in the above result table indicate the total chromium and total bromine by means of XRF screening. PBBs, or PBDEs content shall be further confirmed with reference to IEC 62321-6:2015. Chromium (VI) shall be further confirmed with reference to IEC 62321-7-1:2015, IEC 62321-7-2:2017 or EN ISO 17075-1:2017.

XRF Screening limits for different matrices :

Material	Concentration (%)				
	Cd	Cr	Pb	Hg	Br
Polymeric	BL≤0.006<X<0.014≤ OL	BL≤0.064<X	BL≤0.067<X<0.133≤ OL	BL≤0.066<X< 0.134≤OL	BL≤0.029<X
Metallic	BL≤0.006<X<0.014≤ OL	BL≤0.064<X	BL≤0.067<X<0.133≤ OL	BL≤0.066<X< 0.134≤OL	n.a.
Composite materials	BL≤0.004<X<0.016≤ OL	BL≤0.044<X	BL≤0.047<X<0.153≤ OL	BL≤0.046<X< 0.154≤OL	BL≤0.024<X

Remark: The symbol "X" marks the region where further investigation is necessary.

Test Report No.: 168371759a 001

Page 4 of 5

BBP, DBP, DEHP, DIBP content

Test Method: Ref. to IEC 62321-8:2017

Test Result:

	BBP	DBP	DEHP	DIBP
Maximum permissible Limit (%)	0.1	0.1	0.1	0.1

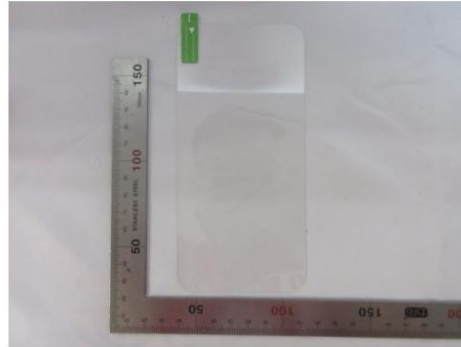
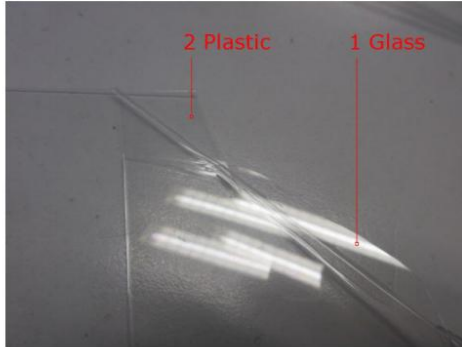
Test No.	Material No.	(%)			
		BBP	DBP	DEHP	DIBP
		RL (%)			
		0.005	0.005	0.005	0.005
T001	M002	< RL	< RL	< RL	< RL

Abbreviation: BBP= Benzylbutyl phthalate
 DBP= Dibutyl phthalate
 DEHP= Bis(2-ethylhexyl) phthalate
 DIBP= Diisobutyl phthalate
 < = less than
 RL = Reporting Limit
 N.A. = Not Applicable
 %= percentage

Test Report No.: 168371759a 001

Page 5 of 5

Sample Photos



Product

- END -

